

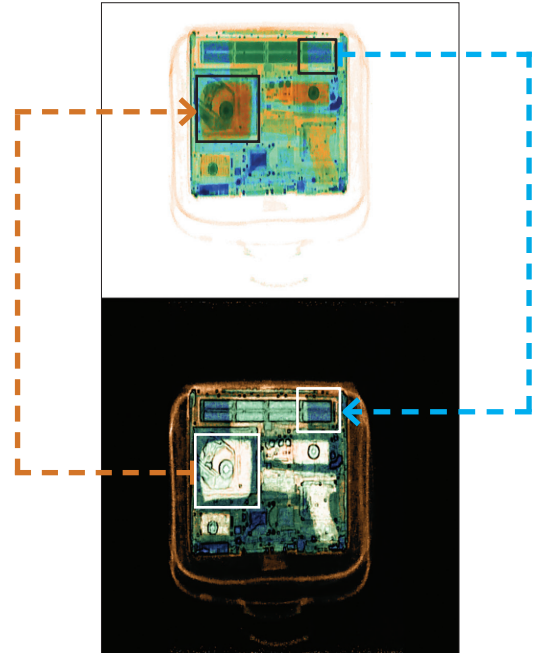
8880BZD BACKSCATTER

Explosives, Weapons and Contraband

AUTOCLEAR
autoclear.com

CROSS-ENHANCED, MULTI-ENERGY

BACKSCATTER X-RAY



Cross-enhanced backscatter: **Inorganics** (steel, nickel-cadmium, copper) from the transmission image are cross-enhanced to the backscatter image. **Organics** (plastics, explosives, narcotics, liquids) from the backscatter image are cross-enhanced to the transmission image. Both images are presented on one monitor for easier viewing.

The precision of multi-energy backscatter X-ray technology, generous tunnel size, and a shorter footprint come together in the 8880BZD. Autoclear's unique single X-ray focal spot design creates identical pixel-for-pixel overlays of both backscatter and transmission images to produce better views of concealed objects, and display areas of concern in bright color. Unlike similar systems, BZD scanners feature a single generator. This breakthrough approach is designed to lower operating and maintenance costs and significantly reduce dose exposure.

- > Unique single generator and monitor design
- > Safer, faster and more accurate than conventional backscatter
- > Cross-enhancements expose potential threats in color

APPLICATIONS:

- > Military
- > Customs
- > Corrections
- > Corporate, government and private security
- > VIP and diplomatic protection
- > Embassies and consulates
- > High-risk events

8880BZD SPECIFICATIONS

BACKSCATTER X-RAY

PHYSICAL DETAILS

Tunnel Size:	88.0 x 80.0 cm 34.6 x 31.5 in. (W x H)
Dimensions:	168.0 x 156.0 x 171.0 cm 66.1 x 61.4 x 67.3 in. (L x W x H)
Weight:	830 kg (1,830 lbs.) uncrated 966 kg (2,130 lbs.) crated
Construction:	Unibody heavy gauge epoxy painted steel construction with stainless steel and aluminum trim and accessories; non-marking casters
Temperature:	Operating: 3° to 40°C (37° to 104°F) Storage: -48° to 60°C (-55° to 140°F)
Humidity:	20% to 95%, non-condensing
Power Consumption:	< 1.7 kVA single phase, 50 or 60 Hz; < 14 Amps @ 110-120 VAC, requires 20 Amp service; < 7 Amps @ 220-240 VAC, requires 10 Amp service

X-RAY GENERATOR

X-ray Tube Head:	Self-contained with sealed oil bath cooling
High Voltage Rating:	160 kV
Duty Cycle:	100%
Beam Orientation:	Vertically upward
Dose Per Exam:	< 10 µR (0.1 µSv)

INSPECTION CAPABILITIES

Material Penetration:	26 mm (1.02 in.) steel
Contrast Sensitivity:	Over 2 million color tones standard
Resolution:	26 AWG wire typical
Processing:	32-bit adaptive image processing with minimum 1 Gbytes+ memory; 2.2GHz or 2.4 GHz+ dual core processor; video processing using next generation graphical processing unit architecture with 550MHz+ GPU clock, 512Mbyte+ video memory and 32+ stream processing cores
Conveyor Speed:	12.2 cm (4.8 in.) per second 7.3 m (24 ft.) per minute
Pulling Weight:	160 kg (352 lbs.)
Film Safety:	Guaranteed for high-speed film up to ISO 1600 (33 DIN)

DETECTORS

High sensitivity scintillator and photomultiplier tube sub-assembly for transmission and backscatter image

VIDEO

Color 27" monitor, 1920 x 1080 video card

STANDARD FEATURES

- autoSoft operating system
- Full-size operator control panel (OCP) with touchpad navigation
- autoTracking guided conveyor belt system
- High/low density and stripping
- Organic/inorganic stripping
- Color; reverse B/W imaging
- Interactive help screens
- 128x Smart Zoom
- Adj. zoom preview window
- D-SCAN
- Dark and light enhance
- RealClear
- autoDensAlert
- autoOutline
- autoSensing
- autoScale
- autoCal
- autoImage recall (10 images)
- Z-SCAN
- Save screen to USB
- Built-in folding conveyor extension and table
- Variable height keypad mount

OPTIONS

- Loading or exit rollerbeds
- Tropical humidity kit
- DVD drive
- autoMatAlert
- autoZ display
- Image archiving
- Built-in training
- Level 1, 2 and 3 networking
- User management
- Locking metal OCP cover
- STI Viewer software for archived image analysis
- Dual monitors
- Laser printer
- Console desk
- kV, mA meter
- Uninterruptible power supply
- Optical X-ray on/off sensor
- Footpad
- Item counter

