

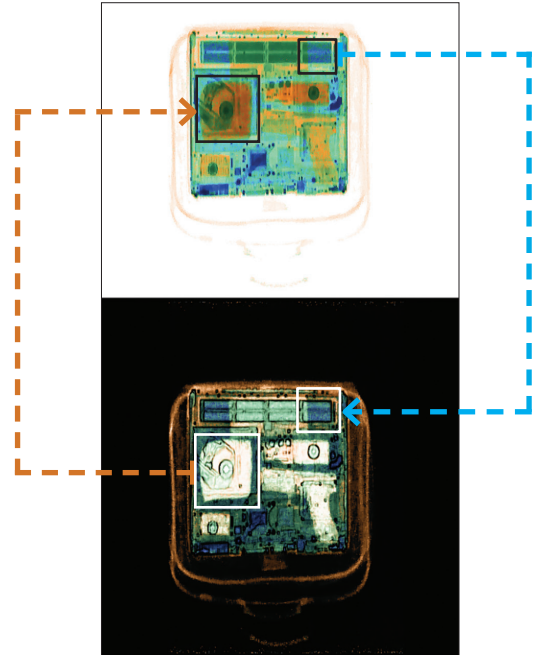
# 6444BZD BACKSCATTER

Explosives, Weapons and Contraband

AUTOCLEAR  
a-clear.com

CROSS-ENHANCED, MULTI-ENERGY

BACKSCATTER X-RAY



Cross-enhanced backscatter: **Inorganics** (steel, nickel-cadmium, copper) from the transmission image are cross-enhanced to the backscatter image. **Organics** (plastics, explosives, narcotics, liquids) from the backscatter image are cross-enhanced to the transmission image. Both images are presented on one monitor for easier viewing.

The 6444BZD leverages patented cross-enhanced, multi-energy backscatter X-ray technology to highlight organic and inorganic matter. Autoclear's unique single X-ray focal spot design creates identical pixel-for-pixel overlays of both backscatter and transmission images that more readily reveal concealed objects, and display areas of concern in bright color. Unlike similar systems, BZD scanners feature a single generator. This breakthrough approach is designed to lower operating and maintenance costs, reduce dose exposure, improve image analysis ergonomics, and reduce the system footprint.

- > Cross-enhancement makes it easier to identify potential threats
- > Reduced lifetime and maintenance costs with single X-ray generator
- > Better ergonomics with one monitor for image review

#### APPLICATIONS:

- > Military
- > Customs
- > Corrections
- > Corporate, government and private security
- > VIP and diplomatic protection
- > Embassies and consulates
- > High-risk events

# 6444BZD SPECIFICATIONS

BACKSCATTER X-RAY

## PHYSICAL DETAILS

<b>Tunnel Size:</b>	64.0 x 44.0 cm 25.2 x 17.3 in. (W x H)
<b>Dimensions:</b>	111.0 x 103.0 x 148.0 cm 43.8 x 40.6 x 58.3 in. (L x W x H)
<b>Weight:</b>	544.3 kg (1,200 lbs.) uncrated 635 kg (1,400 lbs.) crated
<b>Construction:</b>	Unibody heavy gauge steel construction, epoxy painted; with stainless steel and aluminum trim and accessories; non-marking casters
<b>Temperature:</b>	Operating: 3° to 40°C (37° to 104°F) Storage: -48° to 60°C (-54 to 140°F)
<b>Humidity:</b>	20% to 95%, non-condensing
<b>Power Consumption:</b>	< 1.7 kVA single phase, 50 or 60 Hz: < 14 Amps @ 110-120 VAC, requires 20 Amp service; < 7 Amps @ 220-240 VAC, requires 10 Amp service

## X-RAY GENERATOR

<b>X-ray Tube Head:</b>	Self-contained with sealed oil bath cooling
<b>High Voltage Rating:</b>	160 kV
<b>Duty Cycle:</b>	100%
<b>Beam Orientation:</b>	Vertically upward
<b>Dose Per Exam:</b>	< 10 µR (0.1 µSv)

## INSPECTION CAPABILITIES

<b>Material Penetration:</b>	26 mm (1.02 in.) steel typical
<b>Contrast Sensitivity:</b>	Over 2 million color tones standard
<b>Resolution:</b>	26 AWG wire typical
<b>Processing:</b>	32-bit adaptive image processing with minimum 1 Gbytes+ memory; 2.2GHz or 2.4 GHz+ dual core processor; video processing using next generation graphical processing unit architecture with 550MHz+ GPU clock, 512Mbyte+ video memory and 32+ stream processing cores
<b>Conveyor Speed:</b>	13.7 cm (5.4 in.) per second 8.2 m (27 ft.) per minute
<b>Pulling Weight:</b>	160 kg (352 lbs.)
<b>Film Safety:</b>	Guaranteed for high-speed film up to ISO 1600 (33 DIN)

## DETECTORS

High sensitivity scintillator and photomultiplier tube sub-assembly for transmission and backscatter image

## VIDEO

Color 27" monitor, 1920 x 1080 video card

## STANDARD FEATURES

- autoSoft operating system
- Full-size operator control panel (OCP) with touchpad navigation
- autoTracking guided conveyor belt system
- Reversible conveyor direction
- High/low density stripping
- Organic/inorganic stripping
- Color; reverse B/W imaging
- Interactive help screens
- 128x Smart Zoom
- Adj. zoom preview window
- D-SCAN
- Dark and light enhance
- RealClear
- autoDensAlert
- autoOutline
- autoSensing
- autoScale
- autoCal
- autoImage recall (10 images)
- Z-SCAN
- Save screen to USB

## OPTIONS

- Loading or exit rollerbeds
- Tunnel extensions
- Tropical humidity kit
- DVD drive
- autoMatAlert
- autoZ display
- Image archiving
- Built-in training
- Level 1, 2 and 3 networking
- User management
- Locking metal OCP cover
- STI Viewer software for archived image analysis
- Dual monitors
- Laser printer
- Console desk
- kV, mA meter
- Uninterruptible power supply
- Optical X-ray on/off sensor
- Footpad
- Item counter

